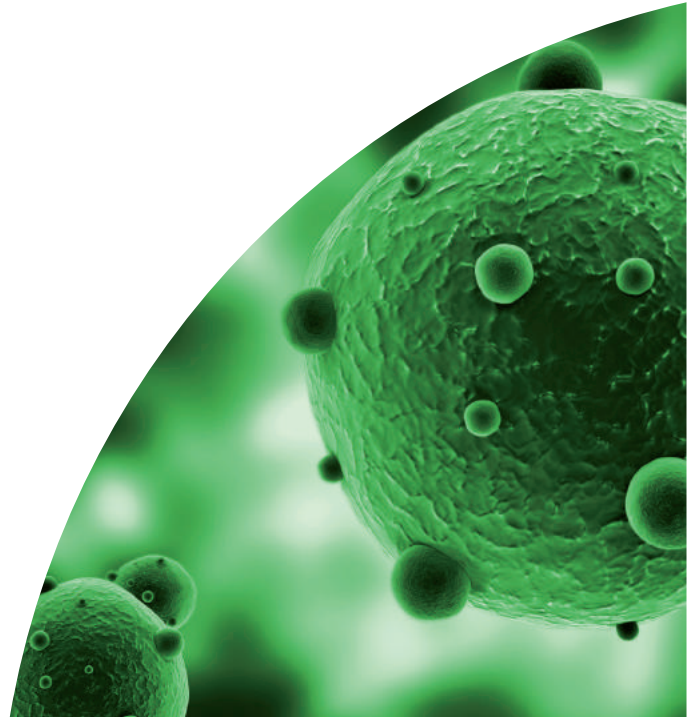


  
CORMAY



Orphée



# VETERINARY

Enhancing Animal Health  
With State-of-the-art Diagnostic Technology



## THE LIFELINE TO BETTER HEALTH

We are constantly developing innovative In-Vitro Diagnostic solutions to accurately uncover the truth hidden in a single drop of blood. Our actions help to understand the known and discover the unknown, leading to the earliest detection, treatment and monitoring of the health of patients all over the world.

Our cutting-edge In-Vitro Diagnostic solutions provide the lifeline that connects doctors and clinicians to their patients to deliver a positive health outcome.

Enhancing Animal Health by Connecting Veterinarians Worldwide  
to a Comprehensive Portfolio of Powerful Diagnostic Tests



HEMATOLOGY



CLINICAL CHEMISTRY



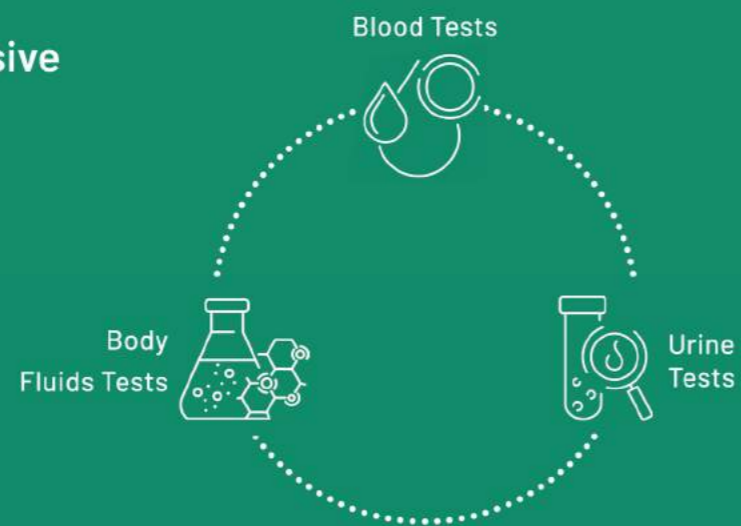
URINALYSIS

## Comprehensive Portfolio of Diagnostic Tests for Companion, Farm and Wild Animals



### Assess Overall Systemic Health Without Need for Invasive, Expensive Procedures:

Bacterial Infections,  
Viral Infections,  
Allergies,  
Organ Failure,  
Organ Functionality,  
Tumors,  
Diseases,  
Malnutrition & Hydration,  
Blood Clotting.



### Comprehensive Portfolio of Diagnostic Tests

Diagnostic tests for **Companion, farm and Wild animals.**

Define the appropriate course of medication for animals suffering from infections or illnesses Perform obligatory pre-anaesthetic diagnosis in your Clinic.

Make decisions for the necessity to perform surgery before organ disorders severely manifest Advise on nutritional diet plans for a healthy transformation.

For all these critical decisions, fast and accurate diagnosis is fundamental to identifying the appropriate course of treatment and your animal's welfare.

For all these critical decisions, Cormay Diagnostics provides high performance, simple to use technologies that fit perfectly in any Veterinary Clinic.



URINALYSIS



## URI TEX VET

### Compact & Portable Urine Diagnostics

- ✓ **Fast** Up to 10 Parameters in less than 1 min
- ✓ **Low Sample Volumes** < 2 ml
- ✓ **Easy to Use**
  - Multiparametric Strips Ready for Use
  - No Sample Pretreatment Necessary
  - Touchscreen Operation
- ✓ **Low Cost per Test**



PARAMETERS	CLINICAL CONDITIONS
High specific gravity (>1.035)	Nephrotic syndrome, dehydration, acute glomerulonephritis, heart failure, liver failure, shock
Low specific gravity (<1.035)	Diabetes insipidus, nephrogenic diabetes insipidus, acute tubular necrosis, pyelonephritis
Protein, microalbumin, creatinine	Renal disease, fever congestive heart failure (CHF), hypertension, tumors
Glucose in protein	Sugar levels are obviously important in diagnosing diabetes
Ketone bodies in urine	Ketonuria occurs in diabetes mellitus and starvation
Bilirubin	Liver damage or disease
Blood	Present of haemoglobin or myoglobin. Kidney damage, infection, kidney or bladder stones,
Red blood cells	kidney or bladder cancer or blood disorders
White blood cells	Haematuria



CLINICAL CHEMISTRY



## ACCENT S120, 240 PRO & MC320

### Compact, High Performance & Comprehensive Clinical Chemistry Diagnostics

- ✓ **Fast** From 360 to 540 Tests/Hr\* with ISE module
- ✓ **Low Sample Volumes** < 100 ul
- ✓ **Easy to Use**
  - Routine Screening & Specialized Testing
  - Fully Automated
  - Optimized Applications for up to 67 Parameters
  - No Sample Pretreatment Necessary
  - Intelligent Software
- ✓ **Low Cost per Test**

\*Theoretical value



HEALTH STATUS	PARAMETERS TESTED
Routine Screening	ALBUMIN, AMYLASE, ALP, ALAT, ASAT, CALCIUM, CK, PHOSPHORUS, TRIGLYCERIDES, CHOLESTEROL, GLUCOSE, CREATININE, TOTAL BILIRUBIN, TOTAL PROTEIN, URIC ACID, UREA
Preanaesthetic tests	ALP, ALAT, ASAT, CK, CREATININE, GLUCOSE, LDH, TOTAL PROTEIN, UREA
Cardiac	CK-MB, ASAT, LDH, PHOSPHORUS, CALCIUM, CREATININE, UREA
Diabetic	GLUCOSE, TRIGLYCERIDES, CHOLESTEROL
Hepatic	ALBUMIN, ALP, ALAT, ASAT, GGT, BILE ACIDS, TOTAL BILIRUBIN, CHOLESTEROL, TOTAL PROTEIN
Pancreatic	TOTAL PROTEIN, ALBUMIN, AMYLASE, GLUCOSE, CALCIUM
Renal	ALBUMIN, CALCIUM, CREATININE, GLUCOSE, PHOSPHORUS, URIC ACID, UREA
Bone metabolism	CALCIUM, PHOSPHORUS, ALP
Electrolytes	CALCIUM, CHLORIDE, POTASSIUM, MAGNESSIUM, SODIUM, PHOSPHORUS,
Lipids	CHOLESTEROL, TRIGLYCERIDES, HDL, LDL



HEMATOLOGY

## Mythic 5VET PRO & Mythic 18 VET

### Compact True 5 DIFF & 3 DIFF Hematology Diagnostics

The MYTHIC line of hematology analysers was designed for use in professional veterinary clinics and laboratory offices.

Those devices combine intuitive controls with quick and accurate results – a full analysis cycle only takes around 1 minute, providing you with 18 or 34 blood parameters, depending on the model. There are multiple animal species defined in the software.

Health status	3-DIFF	5-DIFF
GP / Healthy	✓	✓
PoCT	✓	✓
Viral Infections	✓	✓
Bacterial	✓	✓
Hydration status	✓	✓
Blood Clotting	✓	✓
Allergies		✓
Parasites		✓
Oncology		✓
Anemias differentiation		✓



Comprehensive results available in 1 minute



Intuitive operation



Complete & validated system



Multiple animal species defined

## Mythic 18 VET

### Basic VET office equipment

#### SPECIFICATION

Measurement Method	impedance (WBC, RBC, PLT) and Spectrophotometry (HGB)
Throughput	60 T/H
Sample volume	9.8 µl
Tested parameters	18 parameters: RBC, HGB, HCT, MCV, MCH, MCHC, RDW-CV, WBC, LYM%, LYM#, MON%, MON#, GRA%, GRA#, PLT, MPV, PCT, PDW
Pre-defined species	dog, cat, horse, cattle



## Mythic 5VET PRO

### Professional 5 DIFF VET analyzer

✓ **Fast** Up to 34 Parameters in less than 1 min

✓ **Low Sample Volumes** < 20 µl

✓ **Easy to Use**

Up to 13 Preset Animal Settings Plus 3 User Defined Settings

No Sample Pretreatment Necessary

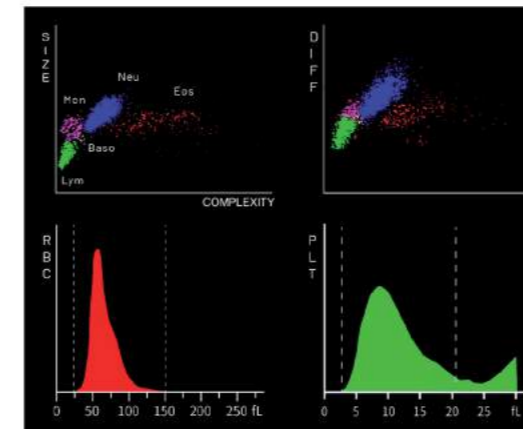
Pre-Diluted Mode for Small & Young Animals

Touchscreen Operation

✓ **Low Cost per Test**

#### SPECIFICATION

Measurement Method	<ul style="list-style-type: none"> <li>laser light Multi-Dimensional Cell Classification (WBC DIFF)</li> <li>impedance (WBC, RBC, PLT)</li> <li>spectrophotometry (HGB)</li> </ul>
Throughput	60 T/H
Sample volume	20 µl
Tested parameters	34 parameters: WBC, LYM%, LYM#, MON%, MON#, NEU%, NEU#, EOS%, EOS#, BASO%, BASO#, RBC, HGB, HCT, MCV, MCH, MCHC, RDW_CV, RDW_SD, PLT, MPV, PDW, PCT, P_LCC, P_LCR, RET%, RET_ABS, IRF, NRBC%, NRBC#, LIC%, LIC#, ALY%, ALY#
Pre-defined species	dog, cat, horse, pig, cow, buffalo, rabbit, monkey, rat, mouse, sheep, goat, camel + 3 User-defined



The technology of multi-angle laser diffraction allows for determining the size, complexity, and granularity of cells, as well as the segmentation of cell nuclei.

As a result, leukocytes (WBC) are accurately separated into 5 cell groups: lymphocytes, monocytes, neutrophils, basophils, and eosinophils.

The analysis of the test results is facilitated by the available histograms and scattergrams visible on a large touch screen display.



## Cormay Diagnostics Tailor-Made Veterinary Healthcare Solutions

Veterinary medicine continues its shift toward proactive veterinary services and recommendations, including regular laboratory tests. With the overriding quest for best patient care, it also gives veterinary practices the opportunity to grow practice income and build a sustainable economic future.

Cormay Diagnostics Veterinary offers the most comprehensive and cost-effective solutions to give the possibility to meet the dynamic veterinary medicine requirements and give an assurance in diagnosis and patient care.



**Expand Clinic Services** - Offer More Services to Your Patients and Pet-Owners



**Fast Service** - Immediate Diagnostic Results for Fast Treatment and Recovery



**Fast Return on Investment** - Reduce and Eliminate Diagnostic Tests Outsourcing



**Plan for Future Business Growth** - Compact in Size with High Throughput Capability



**Diagnostic Test Results You Can Trust** - Sophisticated Technologies that Ensure Accurate Results



**Simple and Convenient** - No Sample Pre-Treatment and Intuitive Analyzer Operation



**Building Trust & Prestige** - Create Expert Knowledge and Professional Healthcare



Join to thousands of **satisfied customers**



CLINICAL CHEMISTRY



HEMATOLOGY



VETERINARY



IMMUNOLOGY



URINALYSIS



RAPID TESTS



Cormay Diagnostics Brands From Europe Answering your IVD Needs

[www.cormaydiagnostics.com](http://www.cormaydiagnostics.com)