

VETERINARY

Empowering Animal Health with Advanced
and Targeted Diagnostics



The lifeline to better health

We are constantly developing innovative In-Vitro Diagnostic solutions to accurately uncover the truth hidden in a single drop of blood. Our actions help to understand the known and discover the unknown, leading to the earliest detection, treatment and monitoring of the health of patients all over the world. Our cutting-edge In-Vitro Diagnostic solutions provide the lifeline that connects doctors and clinicians to their patients to deliver a positive health outcome.



VETERINARY



Enhancing Animal Health by Connecting Veterinarians Worldwide
to a Comprehensive Portfolio of Powerful Diagnostic Tests



HEMATOLOGY



CLINICAL CHEMISTRY



URINALYSIS

Comprehensive portfolio of IVD Solutions. Diagnostics for Every Animal & Every Need.


CORMAY



Embracing the One Health approach!

Cormay Diagnostics veterinary diagnostic solutions bridge the gap between animal health, human health, and environmental well-being.

We ensure a holistic and interconnected approach to challenges among global health.

By our mission, we tend to improve global health by providing rapid, accurate detection of diseases at the human-animal-environment interface.





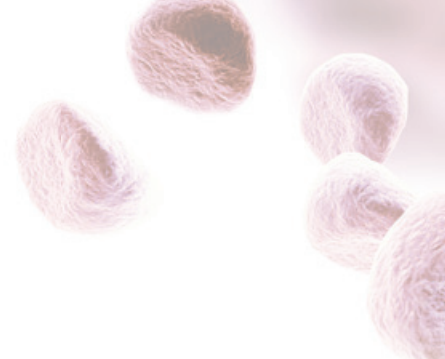
Precision Diagnostics

- Hospital quality diagnostic tests for Companion, Farm and Wild animals.
- Support to define the appropriate course of medication for animals suffering from malfunctions.
- Accurate Diagnostic process - essential in the fight against antibiotic resistance by enabling precise treatment.
- Upfront decisions - prior to organ malfunctions severely manifest.

For all these critical decisions, Cormay Diagnostics provides high performance, simple to use technologies that fit perfectly in any Veterinary Clinic.



HEMATOLOGY



Mythic 5VET PRO & Mythic 18 VET

Compact True 5 DIFF & 3 DIFF Hematology Diagnostics

The MYTHIC line of hematology analysers was designed for use in professional veterinary clinics and laboratory offices.

Those devices combine intuitive controls with quick and accurate results – a full analysis cycle only takes around 1 minute, providing you with 18 or 34 blood parameters, depending on the model. There are multiple animal species defined in the software.

Health status	3-DIFF	5-DIFF
GP / Healthy	✓	✓
PoCT	✓	✓
Viral Infections	✓	✓
Bacterial	✓	✓
Hydration status	✓	✓
Blood Clotting	✓	✓
Allergies		✓
Parasites		✓
Oncology		✓



Comprehensive results available in 1 minute



Intuitive operation



Complete & validated system



Multiple animal species defined

Mythic 18 VET

Basic VET office equipment

SPECIFICATION

Measurement Method	impedance (WBC, RBC, PLT) and Spectrophotometry (HGB)
Throughput	60 T/H
Sample volume	9.8 µl
Tested parameters	18 parameters: RBC, HGB, HCT, MCV, MCH, MCHC, RDW-CV, WBC, LYM%, LYM#, MON%, MON#, GRA%, GRA#, PLT, MPV, PCT, PDW
Pre-defined species	dog, cat, horse, cattle



Mythic 5VET PRO

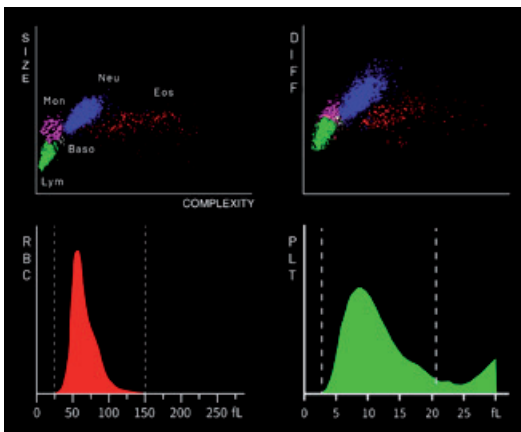
Professional 5 DIFF VET analyzer

- ✓ **Fast** Up to 34 Parameters in less than 1 min
- ✓ **Low Sample Volumes** < 20 ul
- ✓ **Easy to Use**
 - Up to 13 Preset Animal Settings Plus 3 User Defined Settings
 - No Sample Pretreatment Necessary
 - Pre-Diluted Mode for Small & Young Animals
 - Touchscreen Operation
- ✓ **Low Cost per Test**

SPECIFICATION

Measurement Method	<ul style="list-style-type: none"> • laser light Multi-Dimensional Cell Classification (WBC DIFF) • impedance (WBC, RBC, PLT) • spectrophotometry (HGB)
Throughput	60 T/H
Sample volume	20 µl
Tested parameters	34 parameters: WBC, LYM%, LYM#, MON%, MON#, NEU%, NEU#, EOS%, EOS#, BASO%, BASO#, RBC, HGB, HCT, MCV, MCH, MCHC, RDW_CV, RDW_SD, PLT, MPV, PDW, PCT, P_LCC, P_LCR, RET%*, RET_ABS*, IRF*, NRBC%*, NRBC#*, LIC%*, LIC#*, ALY%*, ALY#*
Pre-defined species	dog, cat, horse, pig, cow, buffalo, rabbit, monkey, rat, mouse, sheep, goat, camel + 3 User-defined

* Research Use Only.



The technology of multi-angle laser diffraction allows for determining the size, complexity, and granularity of cells, as well as the segmentation of cell nuclei.

As a result, leukocytes (WBC) are accurately separated into 5 cell groups: lymphocytes, monocytes, neutrophils, basophils, and eosinophils.

The analysis of the test results is facilitated by the available histograms and scattergrams visible on a large touch screen display.



CLINICAL CHEMISTRY

ACCENT S120, MC240 & M320

Compact, High Performance & Comprehensive Clinical Chemistry Diagnostics

- ✓ **Fast** From 360 to 540 Tests/Hr* with ISE module
- ✓ **Low Sample Volumes** < 100 ul
- ✓ **Easy to Use**
 - Routine Screening & Specialized Testing
 - Fully Automated
 - Optimized Applications for up to 67 Parameters
 - No Sample Pretreatment Necessary
 - Intelligent Software
- ✓ **Low Cost per Test**

*Theoretical value



HEALTH STATUS	PARAMETERS TESTED
Routine Screening	ALBUMIN, AMYLASE, ALP, ALAT, ASAT, CALCIUM, CK, PHOSPHORUS, TRIGLYCERIDES, CHOLESTEROL, GLUCOSE, CREATININE, TOTAL BILIRUBIN, TOTAL PROTEIN, URIC ACID, UREA
Preanaesthetic tests	ALP, ALAT, ASAT, CK, CREATININE, GLUCOSE, LDH, TOTAL PROTEIN, UREA
Cardiac	CK-MB, ASAT, LDH, PHOSPHORUS, CALCIUM, CREATININE, UREA
Diabetic	GLUCOSE, TRIGLYCERIDES, CHOLESTEROL
Hepatic	ALBUMIN, ALP, ALAT, ASAT, GGT, BILE ACIDS, TOTAL BILIRUBIN, CHOLESTEROL, TOTAL PROTEIN
Pancreatic	TOTAL PROTEIN, ALBUMIN, AMYLASE, GLUCOSE, CALCIUM
Renal	ALBUMIN, CALCIUM, CREATININE, GLUCOSE, PHOSPHORUS, URIC ACID, UREA
Bone metabolism	CALCIUM, PHOSPHORUS, ALP
Electrolytes	CALCIUM, CHLORIDE, POTASSIUM, MAGNESSIUM, SODIUM, PHOSPHORUS,
Lipids	CHOLESTEROL, TRIGLYCERIDES, HDL, LDL



URINALYSIS



URI TEX VET

Compact & Portable Urine Diagnostics

- ✓ **Fast** Up to 10 Parameters in less than 1 min
- ✓ **Low Sample Volumes** < 2 ml
- ✓ **Easy to Use**
 - Multiparametric Strips Ready for Use
 - No Sample Pretreatment Necessary
 - Touchscreen Operation
- ✓ **Low Cost per Test**



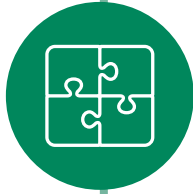
PARAMETERS	CLINICAL CONDITIONS
High specific gravity (>1.035)	Nephrotic syndrome, dehydration, acute glomerulonephritis, heart failure, liver failure, shock
Low specific gravity (<1.035)	Diabetes insipidus, nephrogenic diabetes insipidus, acute tubular necrosis, pyelonephritis
Protein, microalbumin, creatinine	Renal disease, fever congestive heart failure (CHF), hypertension, tumors
Glucose in protein	Sugar levels are obviously important in diagnosing diabetes
Ketone bodies in urine	Ketonuria occurs in diabetes mellitus and starvation
Bilirubin	Liver damage or disease
Blood	Present of haemoglobin or myoglobin. Kidney damage, infection, kidney or bladder stones,
Red blood cells	kidney or bladder cancer or blood disorders
White blood cells	Haematuria



Cormay Diagnostics Veterinary Tailor-Made Healthcare Solutions

Veterinary medicine continues its shift toward proactive veterinary services and recommendations, including regular laboratory tests. With the overriding quest for best patient care, it also gives veterinary practices the opportunity to grow practice income and build a sustainable economic future.

Cormay Diagnostics Veterinary offers personalized and precise diagnostics by integrating human, animal, and environmental health insights. We align with the One Health approach, as we see the interconnectedness of ecosystems, leading to more effective treatment. By leveraging advanced technologies and data, we provide a comprehensive view of health challenges, ensuring timely and accurate diagnoses. We want to offer sustainable health outcomes across all species and the environment.



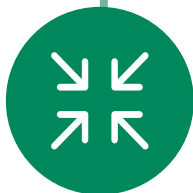
Expand Clinic Services - Offer More Services to Your Patients and Pet-Owners



Fast Service - Immediate Diagnostic Results for Fast Treatment and Recovery



Fast Return on Investment - Reduce time to result and Streamline Diagnostic process



Plan for Future Business Growth - Manage resources more effectively, including staff time, equipment usage, and operational costs.



Diagnostic Test Results You Can Trust - Sophisticated Technologies that Ensure Accurate Results



Simple and Convenient - No Sample Pre-Treatment and Intuitive Analyzer Operation



Building Trust & Prestige - Create Expert Knowledge and Professional Healthcare

Join to thousands of
satisfied customers



Just scan the QR code
for more marketing materials

Correspondence address
303 Pulawska St.
02-785 Warszawa, Poland
tel.: +48 (22) 751 79 10

international@cormaydiagnostics.com
www.cormaydiagnostics.com

Company address
PZ Cormay S.A.
ul. Wiosenna 22
05-092 Łomianki, Poland

Contact our trusted distributors

